

CORROSION PROTECTION METHODS

CORROSION PROTECTION COATINGS

CONVERSION COATINGS

- STABLE OXIDE AND PATINA FORMATION
- PASSIVATION OF STAINLESS STEEL
- ANODIZING OF ALUMINUM, TITANIUM, MAGNESIUM etc.
- CHEM FILM/ CHROMATE TYPE COATINGS

METALIC COATINGS

- . HOT DIP GALVANIZED COATINGS
- . ELECTROGALVANIZED COATINGS
- . MECHANICALLY PLATED COATINGS
- . FLAME, ELECTRIC ARC and PLAZMA METALIZATION
- . VACUM VAPOR DEPOSITION
- . POWDER FUSION COATING
- . SPECIALTY TECHNICAL COATINGS
 - HARD CHROME
 - ELECTROLESS NICKEL WITH TEFLON or DIAMONDS
 - ALLOY COATINGS
 - CERAMIC COATINGS

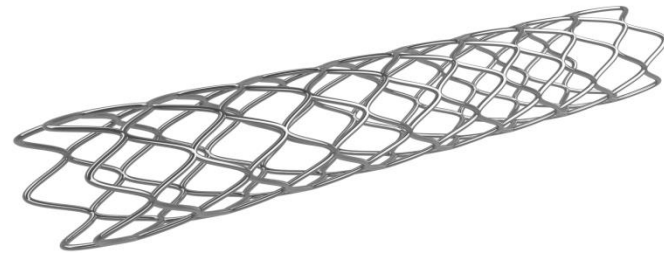
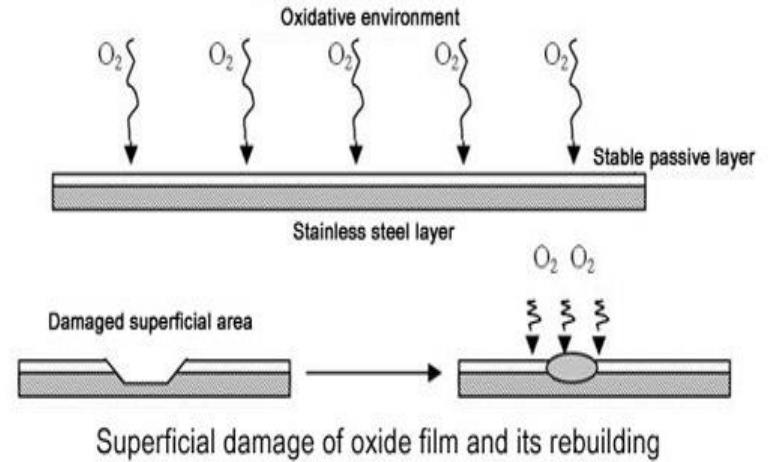
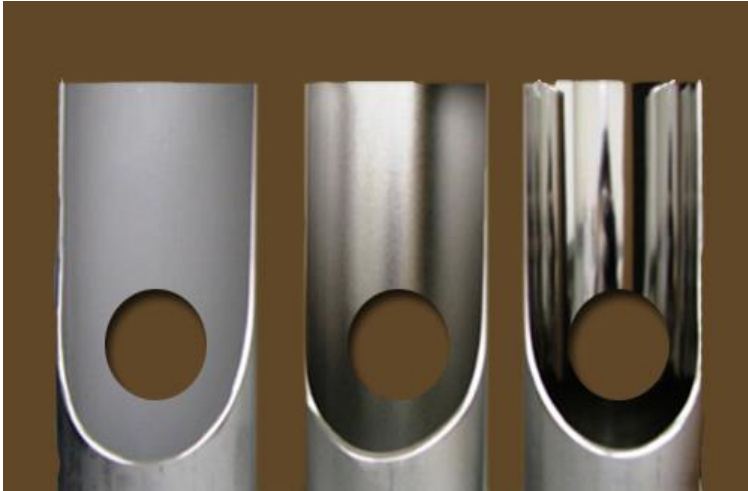
CORROSION PROTECTION COATINGS

STABLE OXIDE AND PATINA FORMATION



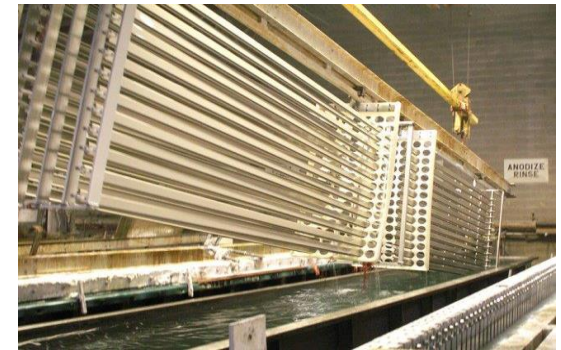
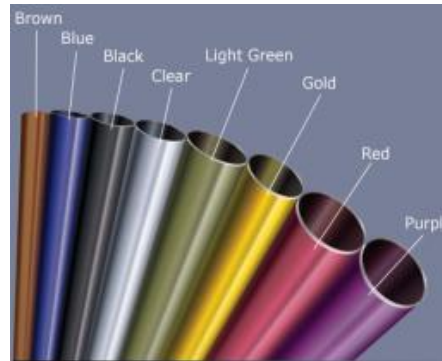
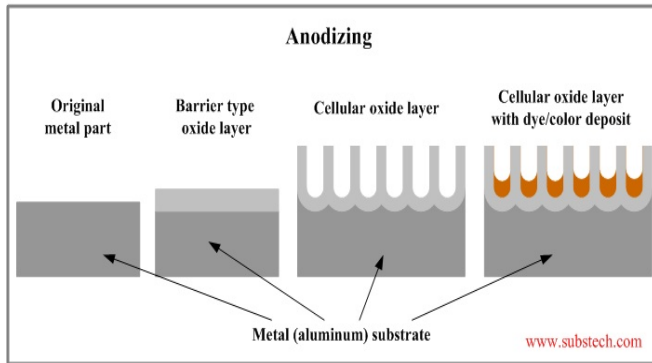
CORROSION PROTECTION COATINGS

POLISHING and PASSIVATION OF STAINLESS STEEL



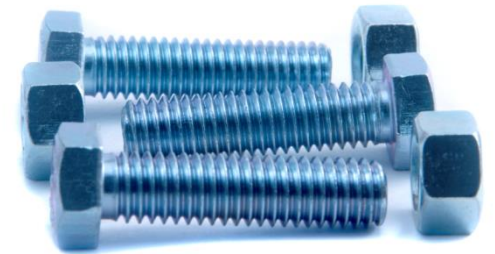
CORROSION PROTECTION COATINGS

ANODIZING OF ALUMINUM, TITANIUM, MAGNESIUM etc.

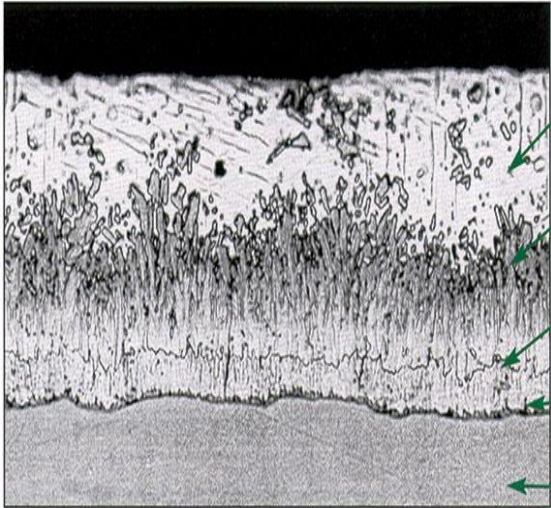


CORROSION PROTECTION COATINGS

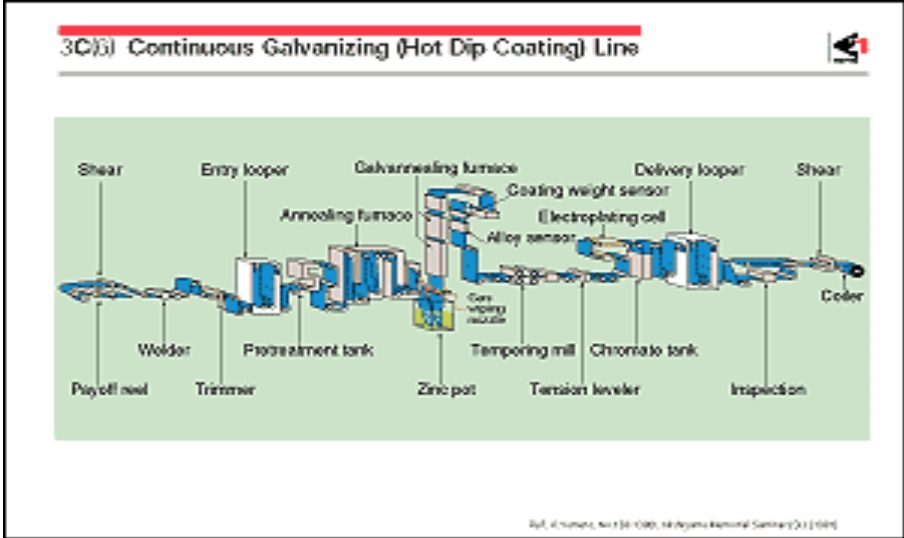
CHEM FILM/ CHROMATE TYPE COATINGS



HOT DIP GALVANIZED COATINGS



- Eta**
(100% Zn)
70 DPN Hardness
- Zeta**
(94% Zn 6% Fe)
179 DPN Hardness
- Delta**
(90% Zn 10% Fe)
244 DPN Hardness
- Gamma**
(75% Zn 25% Fe)
250 DPN Hardness
- Base Steel**
159 DPN Hardness



ELECTROGALVANIZED COATINGS

RACK PLATING



ELECTROGALVANIZED COATINGS

BULK/BARREL PLATING



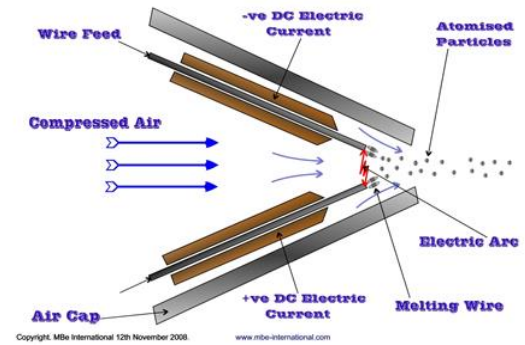
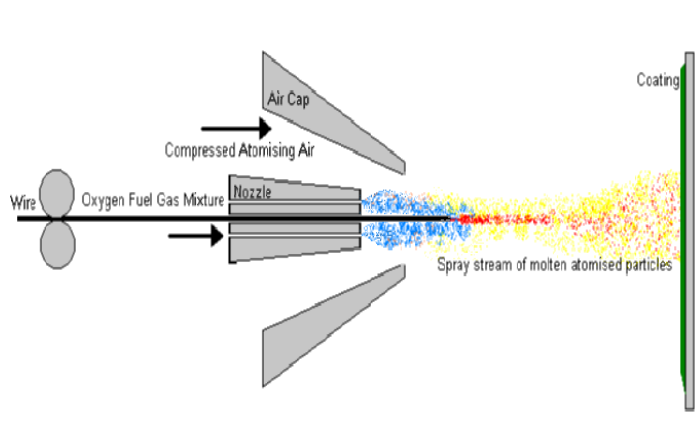
MECHANICAL PLATING



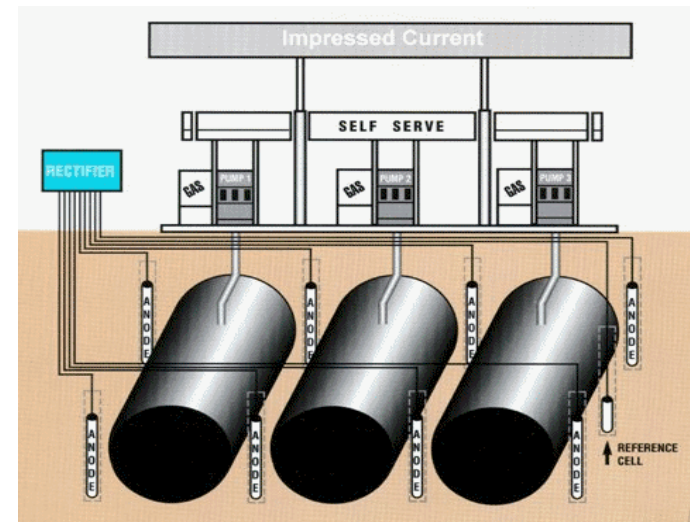
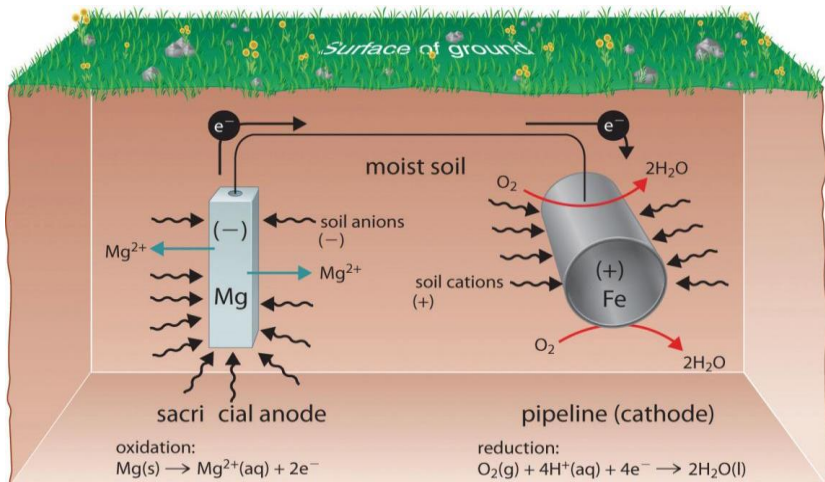
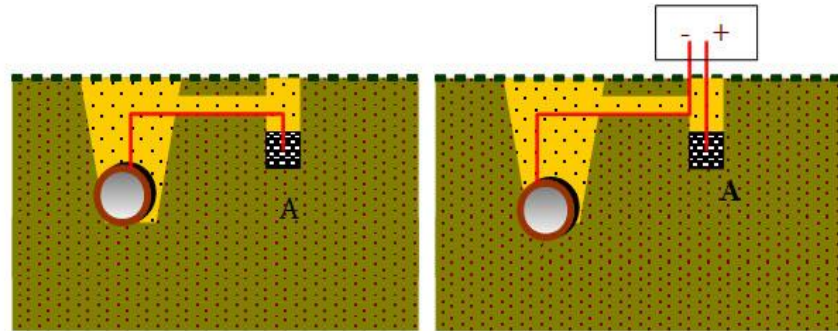
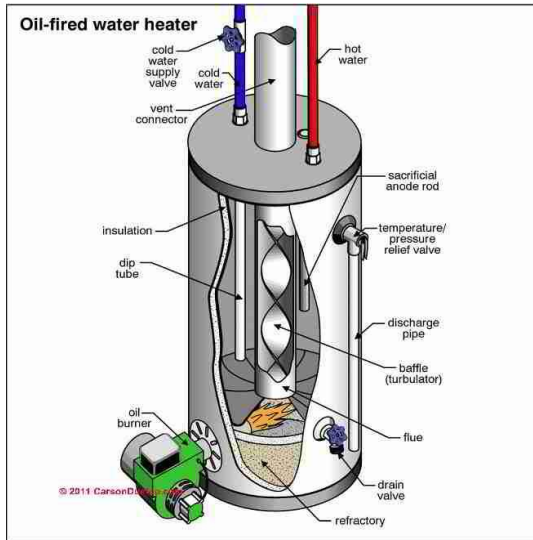
Mechanical plating system



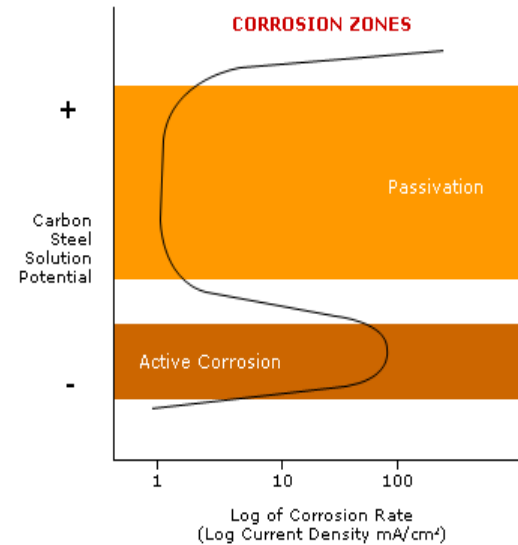
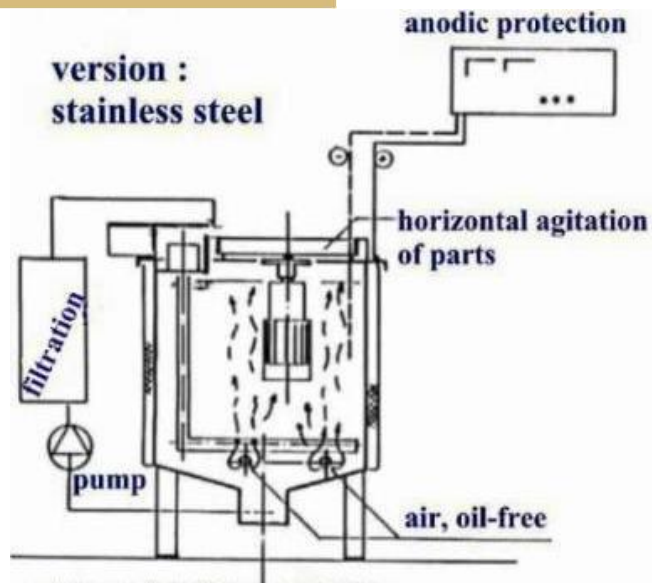
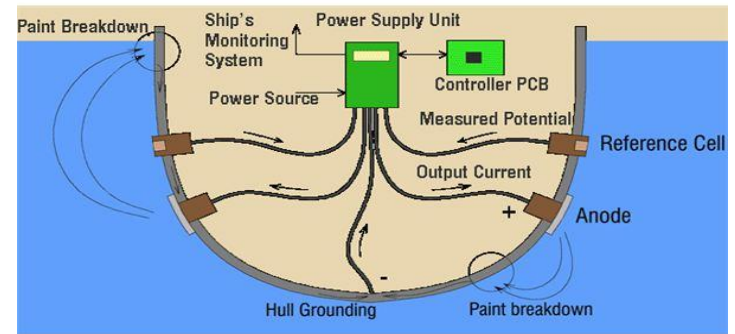
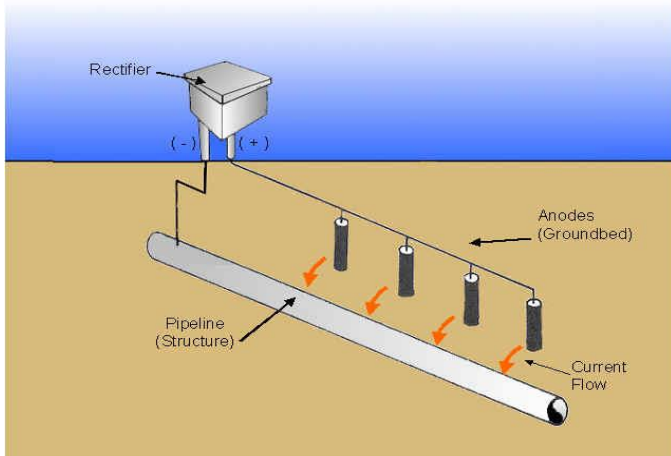
FLAME, ARC or PLAZMA METALIZATION



ELECTROCHEMICAL/GALVANIC PROTECTION



ELECTROCHEMICAL/GALVANIC PROTECTION



CORROSION TESTING

